

H A P P Y H O U R



Foster 



QUALITY IN EVERYDAY LIFE

Research, style and beauty, all in one stroke: the Foster brand. The desire to find new solutions to improve the experience and enjoyment of one's kitchen is what drives our research, and the source of our satisfaction. We have reached important goals in developing household appliances, and with the same enthusiasm we share and develop ideas with the most important kitchen manufacturers in Italy and worldwide. This is the Foster philosophy: excellence in quality standards, great manufacturing craftsmanship, ever innovative solutions interpreted with our signature style and taste.

HIGH-LEVEL DESIGN

The love for art and the taste of beauty, which we breathe every day in our Palazzo Terranova in Brescello, with its frescoed rooms full of history, considered artistic and cultural heritage by the Superintendence for Cultural Heritage and FAI, is naturally infused in all our products. This is where the renowned elegance and refined design that distinguishes the Foster brand is born, and that has made it one of the most loved brands in the world by architects all over the world and by customers who appreciate beauty combined with functionality.



FOSTER GROUP

Foster operates in 50 countries through a network of selected partners. It stays close to its customers with quality, efficiency and courteous service. Anytime, anywhere, with a competent sales and technical team and a comprehensive after-sales service. The multilanguage website is updated daily, because we believe it is not just a tool, but a window on the world.



FOSTER GROUP

FOSTER SPA

Via M.S. Ottone, 18-20
42041 - Brescello - RE
ITALY

EKOTEK SRL

Strada Monzambano, 73
46040 Ponti sul Mincio - MN
ITALY

BAUTEK SRL

Strada Monzambano, 73
46040 Ponti sul Mincio - MN
ITALY

FOSTER MILANO INC

7300 Biscayne Boulevard - Suite 200
Miami, Florida - 33138
USA

FOSTER SHANGHAI CO. LTD

Rm 1004, Jintie City Plaza North, No.
818 Zhenbei Rd. 200333 Shanghai
CHINA





MUCH MORE THAN A SINK

The functional centre HappyHour moves the definition of sink towards new horizons.

HappyHour is the perfect stage for your convivial moments with family and friends.

Thanks to its large kit of accessories, it is the veritable protagonist of your parties, aperitifs or finger-food dinners, and at the same time the perfect workstation for a real chef, able to appear and disappear at will under its multi-layered accessories' concept.



FUNCTIONALITY AT ITS PUREST

Foster HappyHour is endowed with a system of multi-level sliding guides which transform the sink into a practical and functional workstation, on which the accessories allow for maximum creativity in achieving a perfect result in any recipe.

AN INNOVATIVE – AND ENVIRONMENTALLY FRIENDLY – CONCEPT

Great functionality, refined colour matching and eco-friendly materials. This is the winning mix of HappyHour, combining the hygiene and practicality of stainless steel with the “green” elegance of the numerous accessories.



STEEL AND FINISH

Foster HappyHour is manufactured in high-gauge AISI304 stainless steel; the craftsmanship of Foster's highly trained personnel gives HappyHour a perfect satin finish, down to the smallest detail.

Stainless steel is a noble, timeless material which lasts forever, is 100% recyclable and highly hygienic. Foster's products are manufactured exclusively with the best-quality stainless steel. AISI 304 (EN 1.4301) is an austenitic stainless steel with a content of 18%-20% of Chrome and 8%-10% of Nickel, a composition which confers to this material the very best resistance to corrosion.



PVD FINISH PHISICAL VAPOR DEPOSITION

PVD is obtained by a physical - not chemical - process, with a resistance superior to that of any other treatment.



THE PVD STEEL:

- exceptional superficial hardness
- more resistance against wear and abrasion
- more resistance against corrosion, solvents, detergents and high acidity food
- unalterable by UV rays
- eco-friendly
- hypoallergenic

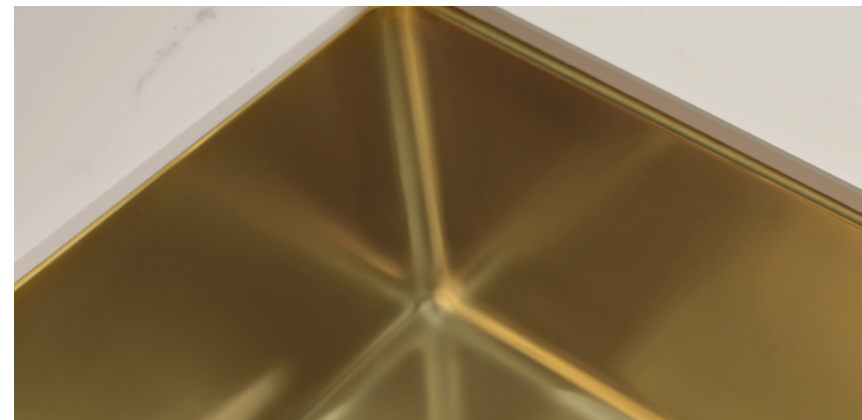
GUN METAL

Steel in a dark suit: elegant,
quiet, and technological.
Perfect to celebrate the Foster design.



COPPER

A warm, old-time tinge.
It gives steel a new appeal
and personality, in whatever pairing.



GOLD

Noble and with character: gold
becomes light and refined. A perfect
match even in a minimal context.



A DISTINCTIVE DESIGN

The design of HappyHour is carefully studied. The sink's bottom is skillfully crafted to obtain a diamond shape that is distinctive and functional.

CARE OF DETAIL, A FOSTER TRADEMARK

Foster HappyHour is manufactured with the utmost care for each small detail, as for example the perimetric overflow and the Space waste-fitting, which are standard features of this masterpiece sink.



FOR A COCKTAIL
PARTY WITH
FRIENDS







INTRODUCING HAPPYHOUR...

to welcome guests to an aperitif with friends,
whenever you fancy it to party and relax at the same time

TO MAKE
THE CHEF HAPPY







Foster

G. Bright

TRANSFORMING HAPPYHOUR...

into a practical and perfect workstation
to satisfy the chef's every need.

FOR A FIRST-CLASS
DINNER







HAPPYHOUR WILL NEVER CEASE TO SURPRISE YOU...

in its many transformations, it appears in its evening dress,
to offer an elegant, refined and chic service.

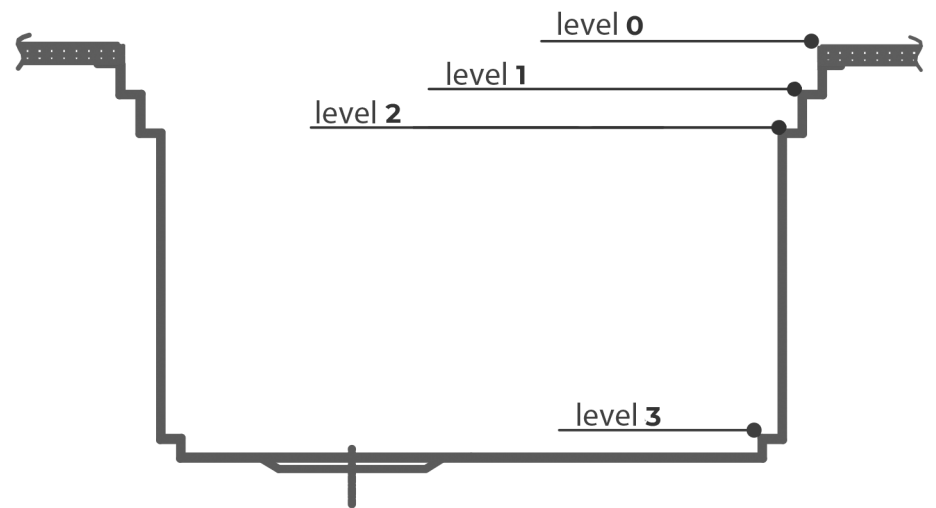


ACCESSORIES RANGE





Optional accessories. The “rails” system makes it possible use a combination of numerous accessories. Grids, chopping boards, utensils’ ranging systems, bowls and containers of different dimensions can be alternated in the workspace with a simple gesture, and can easily be stacked, in order to be on hand at all times.





ACCESSORIES INCLUDED



8200 002
bamboo chopping board
49x42 cm
LEVEL 0 - LEVEL 3



8100 600
Milano Black grid 39,2x44,8 cm
LEVEL 2 - LEVEL 4

ACCESSORIES



8200 601
kit bowl Ø 30 cm
with bamboo support 44,8x42,2
LEVEL 0 - LEVEL 3



8100 625
kit spices' holders 10x47,4 cm
LEVEL 1



8100 626
kit bottles-, cutlery-holders
14x47,4 cm
LEVEL 1



8100 627
kit multi-accessories' support frame 28x47,4,
with white HDPE chopping board
LEVEL 1

ACCESSORIES



8100 620
kit spices' holders 10x44,8 cm
LEVEL 2



8100 621
kit bottles-, cutlery-holders
14x44,8 cm
LEVEL 2



8100 622
kit of 3 steel bowls 18x44,8 cm
LEVEL 2



8100 628
kit multi-bowl 28x44,8 cm
LEVEL 2

ACCESSORIES



8100 623
kit of 2 steel bowls
18x42,2 cm
LEVEL 3



8100 624
kit of 3 steel bowls
18x42,2 cm
LEVEL 3



8642 000
nut wood chopping board
18x44,8 cm
LEVEL 2



ACCESSORIES TO BE MATCHED



1778 000
Steel tray dim Ø 30 cm
Only to be matched with 8200 601



8100 030
knives-holder
Only to be matched with 8100 621 and 8100 626

ACCESSORIES TO BE MATCHED



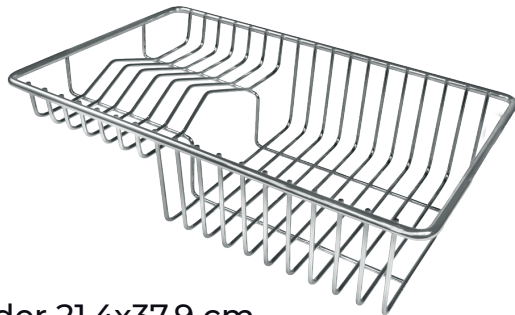
8151 000

st. steel perforated pan 21,5x38 cm
Only to be matched with 8100 627



8159 101

grating kit complete with frame support and food collection tray. Only to be matched with 8100 627



8100 303

st. steel dishes holder 21,4x37,9 cm
Only to be matched with 8100 627



MIXER TAPS



8425 100
Milanello Single lever
mixer tap with rotating
barrel and movable shower

Stainless steel covering
strengthening plate is included
cut-out for tap installation: \varnothing 35 mm
built-in base: \varnothing 50 mm
rotating angle: 360°
ceramic disc cartridge
max worktop thickness: 40 mm



8477 100
Tube Single lever mixer
tap with rotating barrel
and flexible shower

In AISI 316 stainless steel
strengthening plate is included
cut-out for tap installation: \varnothing 35 mm
built-in base: \varnothing 55 mm
rotating angle: 360°
ceramic disc cartridge
max worktop thickness: 40 mm
rear encumbrance: 25 mm

DISPENSERS



8424 856
Skin Gun Metal Single lever
mixer tap with rotating barrel
and movable shower

Aesthetic parts in AISI 316
with PVD treatment
strengthening plate is included
cut-out for tap installation: \varnothing 35 mm
built-in base: \varnothing 50 mm
rotating angle: 360°
ceramic disc cartridge
max worktop thickness: 40 mm



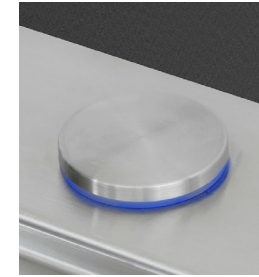
8520 100
EVO Built-in liquid
soap/detergent dispenser
Satin finish.
cut-out: \varnothing 35 mm



8520 156
EVO Built-in liquid
soap/detergent dispenser.
Gun Metal PVD satin finish.
cut-out: \varnothing 35 mm



AUTOMATIC WASTE FITTINGS



8407 117

Space Light automatic waste fitting
with electric remote control and warning light

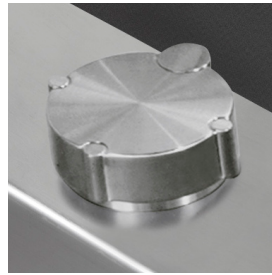
cut-out: \varnothing 35 mm



8407 120

Space PUSH GUN METAL automatic waste fitting
with Push-button control

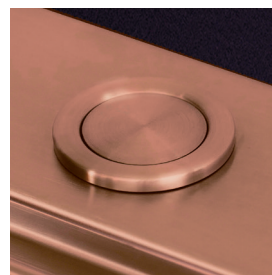
cut-out: \varnothing 35 mm



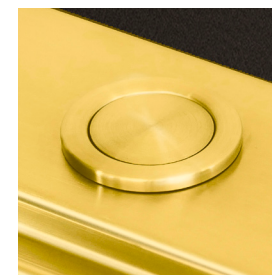
8407 115
Space MILANO automatic waste fitting
with round rotating remote control
cut-out: \varnothing 35 mm



8407 116
Space PUSH automatic waste fitting
with Push-button control
cut-out: \varnothing 35 mm



8407 122
Space PUSH COPPER automatic waste fitting
with Push-button control
cut-out: \varnothing 35 mm



8407 121
Space PUSH GOLD automatic waste fitting
with Push-button control
cut-out: \varnothing 35 mm

HAPPYHOUR 1400



finish

satin st. steel

code

1050 850

installation: undermount
 finish: satin finish
 steel: AISI 304 stainless
 dimensions: 1448x503 mm
 bowl: 1397x400 mm
 cut-out: 1397x477 mm
 bowl depth: 263 mm
 drain: Space 3½"

Accessories included:

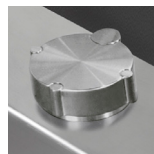
8200 002 | Bamboo chopping board

8100 600 | Milano Black grid

Optional automatic waste:



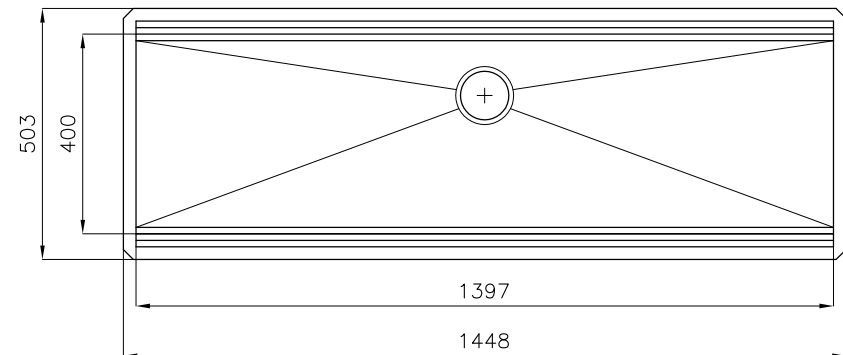
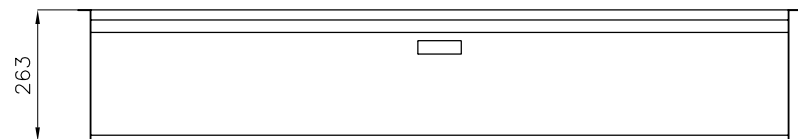
8407 116
Space Light



8407 116
Space
MILANO



8407 116
Space PUSH
INOX



HAPPYHOUR 1200



installation: undermount
 finish: satin finish
 steel: AISI 304 stainless
 dimensions: 1236x503 mm
 bowl: 1185x400 mm
 cut-out: 1185x477 mm
 bowl depth: 263 mm
 drain: Basket 3½"

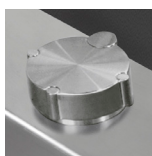
Accessories included:

8200 002 | Bamboo chopping board
8100 600 | Milano Black grid

Optional automatic waste:



8407 116
 Space Light



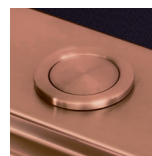
8407 116
 Space
 MILANO



8407 116
 Space PUSH
 INOX






8407 116
 Space PUSH
 GUN METAL

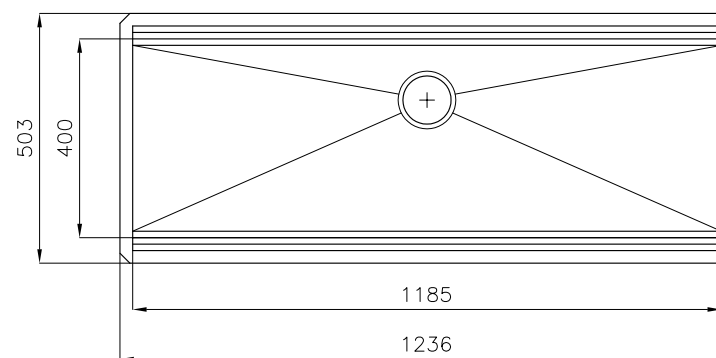
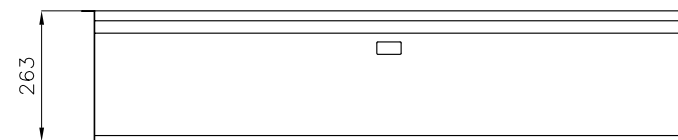


8407 116
 Space PUSH
 COPPER



8407 116
 Space PUSH
 GOLD

finish	code
satin st. steel	1049 850
 satin st. steel PVD - gun metal	1049 856
 satin st. steel PVD - copper	1049 858
 satin st. steel PVD - gold	1049 859







H A P P Y H O U R



Foster 

Foster S.p.A. - Via M.S. Ottone, 18-20 42041 Brescello - Italia - info@fosterspa.com - export@fosterspa.com
www.fosterspa.com